

**GALERIA  
BOGOTÀ**

marble catalogue

# GALERIA BOGOTÀ

## content

### Beige

boticcino.....	3
Breccia Aurora.....	5
Breccia Daino.....	8
Burdur Beige.....	11
Creama Marfil.....	13
Perlato di Sicilia.....	15
Travertino.....	17
Imperial Bronze.....	19

### Black & Grey

Black Aziza.....	22
Marquina Black.....	24
Portoro.....	27
Pietra Grey.....	29
Bardiglio Imperial.....	31

### White

Arabescato Breccia.....	33
Bianco Lasa.....	35
Calacatta.....	37
Carrara.....	39
Thasos.....	42

### Our Latest Work

Lake View.....	44
Andrea Eastcort Rehab.....	48
Stone Park.....	50
Other Work.....	53

About Galeria Bogotá.....	70
---------------------------	----



# GALERIA BOGOTÀ

## Boticcino

is a calcite cream marble, natural stone. Its soft beige base is adorned by light golden veins and particular white shades that suggest the movement of the sea foam.

This marble comes from the confines of Lombardy and Veneto, therefore, faithful to its classic origin and Venetian style, it manages to delight us with its timelessness.



# GALERIA BOGOTÀ



## Breccia Aurora

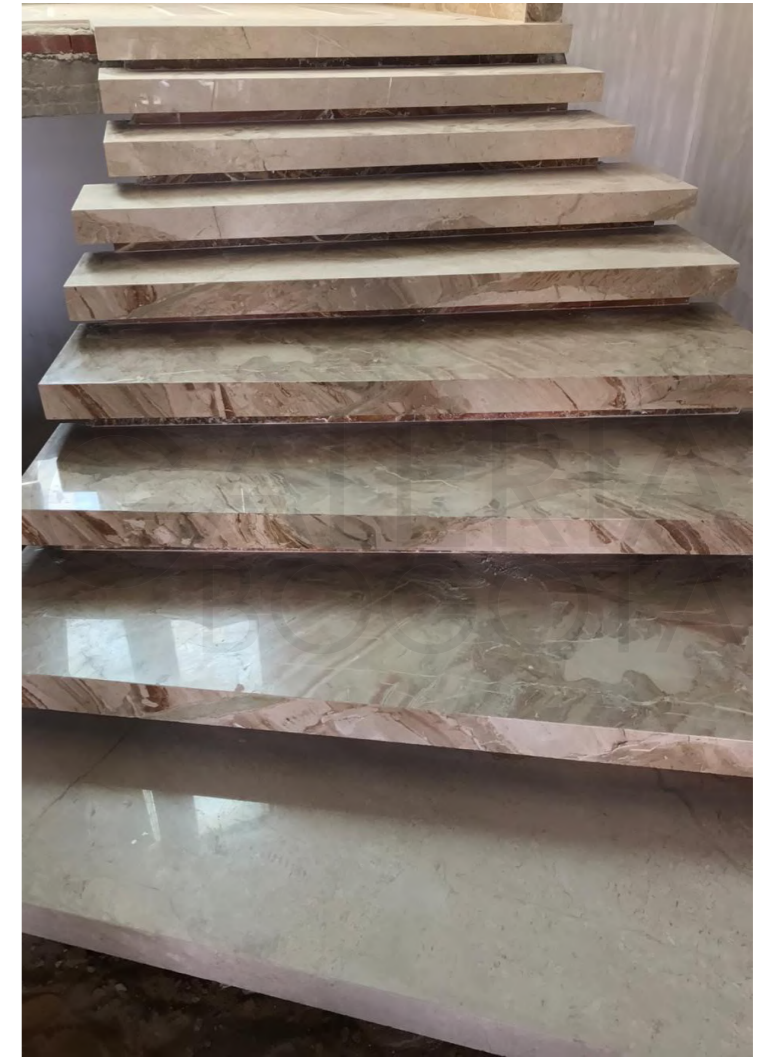
is an Italian marble having a splendid beige color and more or less marked veining, depending on the quarry of provenience. As this is a natural stone, Breccia Aurora marble may sometimes present green and brown shades that manage to accentuate the stone's personality and the character of the different settings of application.



# GALERIA BOGOTÀ



# GALERIA BOGOTÀ



Lake View B

# GALERIA BOGOTÀ

## Daino Reale Nuvolato or Breccia Sarda

is a typical italian marble extracted in the island of Sardinia. It features random cloudy light and dark beige veining throughout. Ideal for internal pavements.



# GALERIA BOGOTÀ



# GALERIA BOGOTÀ



# GALERIA BOGOTÀ

## Burdur Beige

is favored for its timeless beauty and versatility. Its warm beige tones and subtle veining create a sense of tranquility and sophistication, making it an excellent choice for enhancing the aesthetic appeal of various design projects. Whether used in residential or commercial applications, Burdur Beige Marble adds a touch of elegance and refinement to any environment.



# GALERIA BOGOTÀ



# GALERIA BOGOTÀ

## Crema Marfil

is a luxurious and timeless natural stone renowned for its exquisite beauty and sophisticated appeal. Quarried primarily in the Alicante region of Spain, this stone showcases a warm and creamy beige color palette that effortlessly adds a touch of elegance to any space.



# GALERIA BOGOTÀ

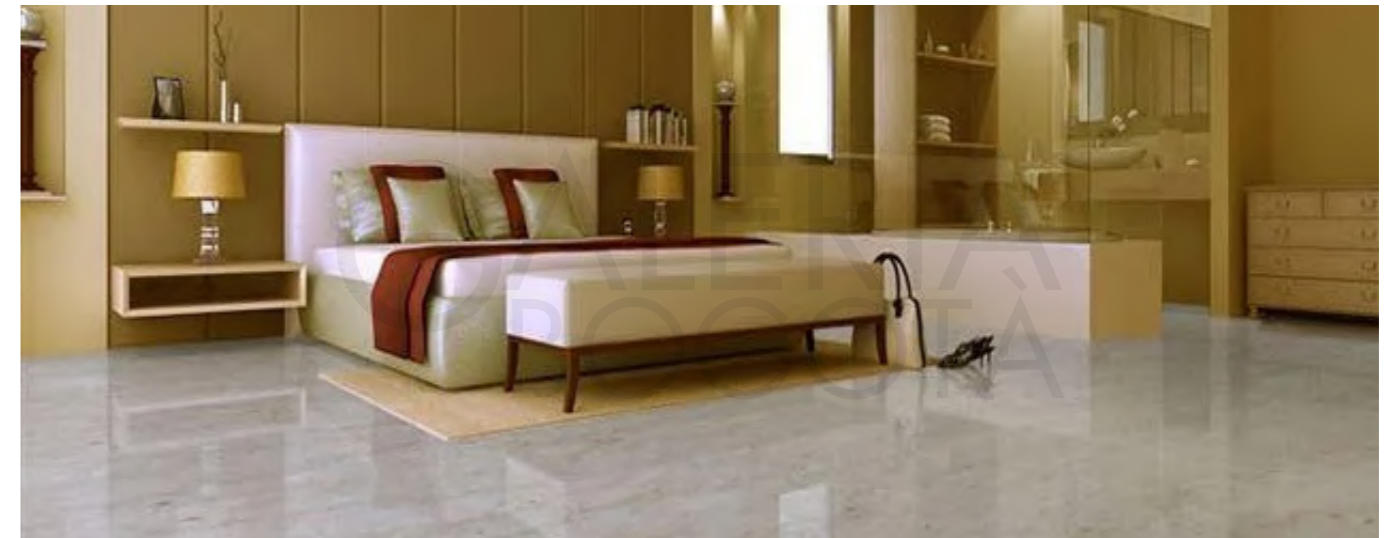


## Perlatino di Sicilia

represents one of the most appreciated and well-known varieties of marble among the natural stones extracted in Sicily. It is clearly a "relative" stone product of the more famous Perlato di Sicilia from which it differs in color and some minimal technical characteristics. However, what unites the Perlatino di Sicilia marble with the Perlato di Sicilia is undoubtedly the undisputed elegance of its soft and timeless color, the excellent technical features and the versatility of use.



# GALERIA BOGOTÀ



# GALERIA BOGOTÀ

## Travertine

is capable of elegantly dressing bathrooms and kitchen worktops, large format walls in interiors, interior and exterior floors, and light facades in a giant format.



# GALERIA BOGOTÀ



# GALERIA BOGOTÀ

## Imperial Bronze

with its rich, dark tones and subtle metallic luster, stands as a timeless testimony to the enduring allure of classic materials. This exquisite stone elevates luxury interiors, providing architects and interior designers with a distinctive and opulent option for creating elegant spaces.



# GALERIA BOGOTÀ



# GALERIA BOGOTÀ



# GALERIA BOGOTÀ

## Black Aziza

is a black calcite marble. The tone of its base is reminiscent of obsidian because, in some points, it acquires toasted nuances.

The veins of Black Mirage alternate three colors: gold, copper, and white. They present a linear pattern, practically straight. They are often intertwined perpendicularly. The small number of veins and their particular colors offer a spectacular and exquisite play of contrasts.



# GALERIA BOGOTÀ



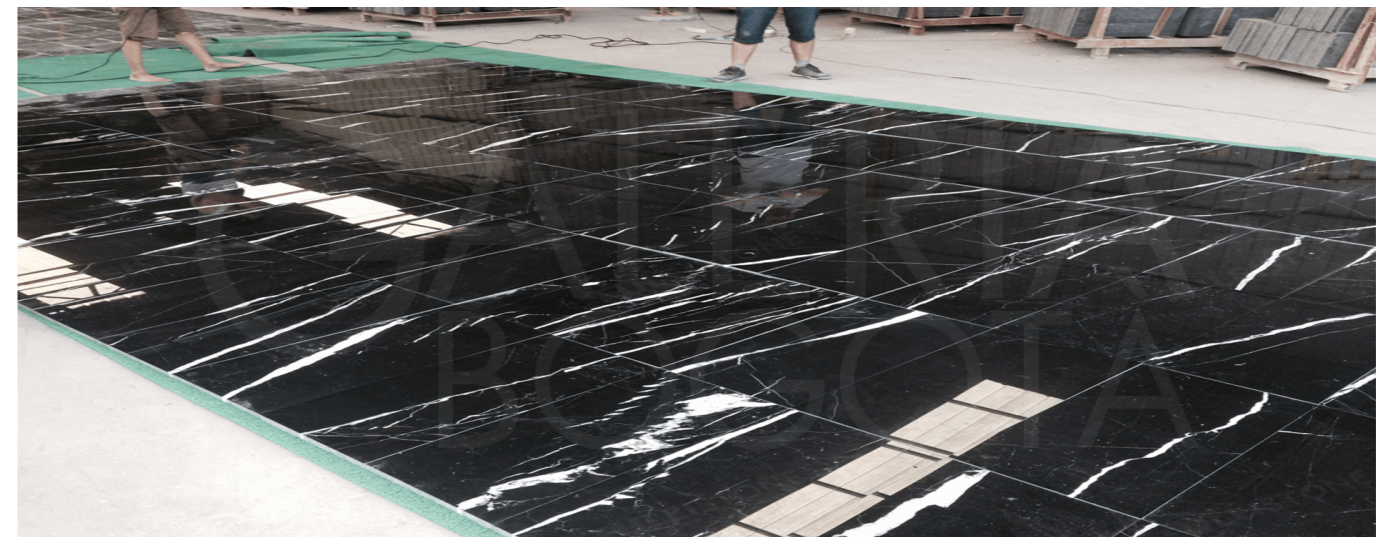
# GALERIA BOGOTÀ

## Nero Marquina

is a classic Spanish marble that creates visual drama and appeal. Black marble is excellent for creating sophisticated, contemporary, and moody design atmospheres. It is also great for making tile checkerboard floors when paired with white marble



# GALERIA BOGOTÀ



# GALERIA BOGOTÀ



We take care of the smallest details.

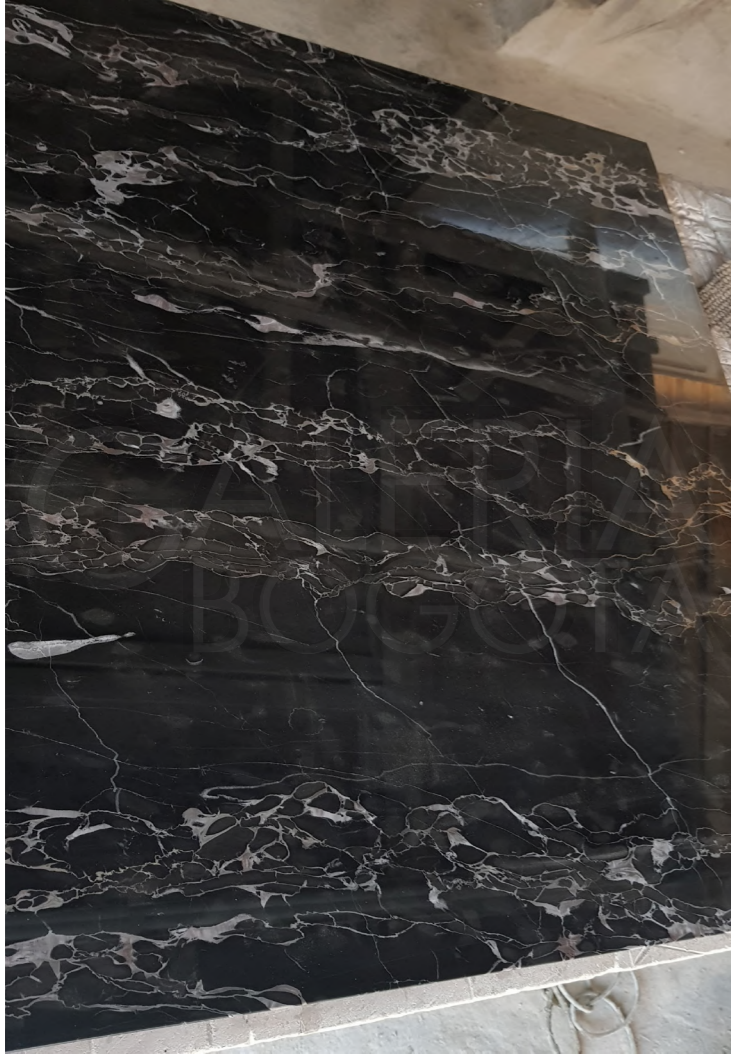
# GALERIA BOGOTÁ

## Portoro

famed for its dramatic black base and striking gold veining, is a timeless testimony to the grandeur of the classics. This extraordinary marble infuses luxury interiors with a sense of drama and sophistication, making it a favored choice for architects and interior designers aiming to craft truly stunning environments.



# GALERIA BOGOTÀ



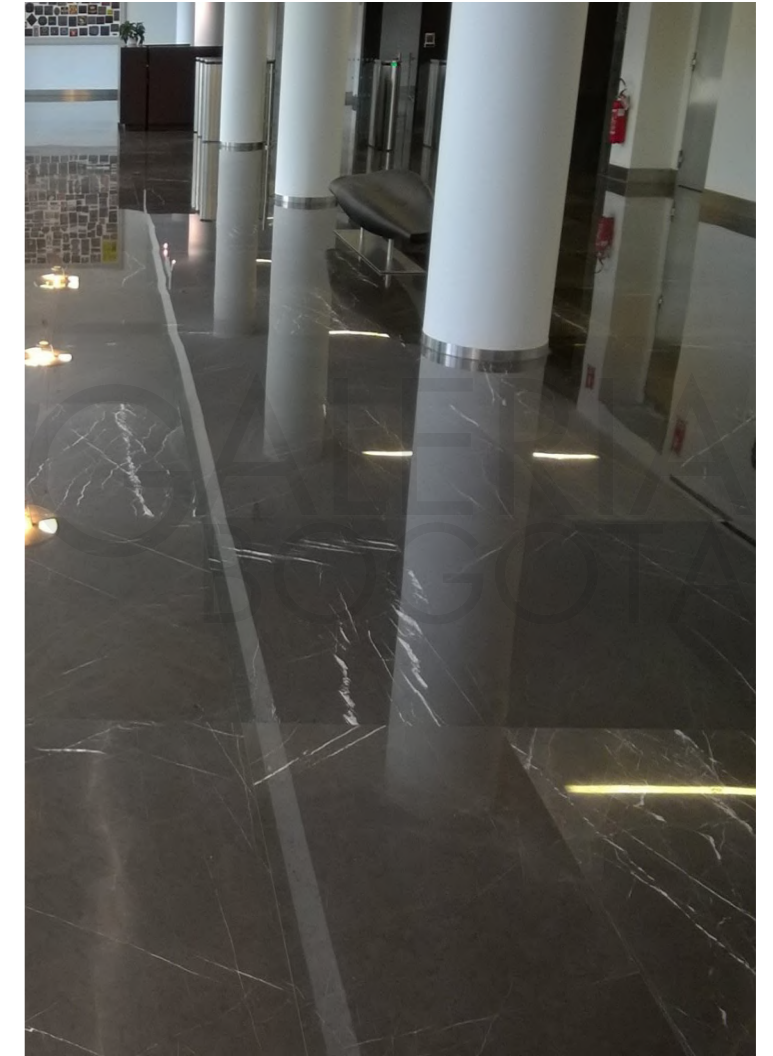
## Pietra Grey

is a calcite grey marble. Uniform in appearance and compact, the tones of its base move very subtly between carbons and graphite. The alternation between very fine white streaks and barely perceptible linear slate-colored glazes provide animation and elegance.

This grey marble fits perfectly in contemporary environments that wish to emphasize the use of natural stone. Pietra Grey offers dynamism to any space without renouncing to sobriety thanks to the chromatic balance between its dark background and the thin snow lines that run through it.



# GALERIA BOGOTÀ



# GALERIA BOGOTÀ

## Bardiglio Imperial

transforms your space with its majestic allure and intricate veining. By day, its deep gray tones create an air of serene sophistication, and as night falls, it reveals a mysterious elegance. This marble captures the essence of timeless grandeur, making it an exceptional choice for those desiring a distinct and luxurious touch in their interiors.



# GALERIA BOGOTÀ



## Arabescato Breccia

is a white calcitic marble. Its particular breccia morphology offers a beautiful game of contrasts between the white background and the grey and brown veins.

The breccia stones have a spectacular aesthetic force thanks to how they originated, combining different geological formations from a fragmentation. The movement of its lines is perfect for large format claddings with a book matching style and vein continuation.



# GALERIA BOGOTÀ



## Bianco Lasa

is a white calcite marble. It has a white crystalline base and distinctly linear bluish-grey veins. The soft combination of whites and greys punctually intersperses one or two prominent thick black veins. Each black vein is composed of tourmaline and graphite and becomes the protagonist of the room thanks to its broad and defined line shape.



# GALERIA BOGOTÀ



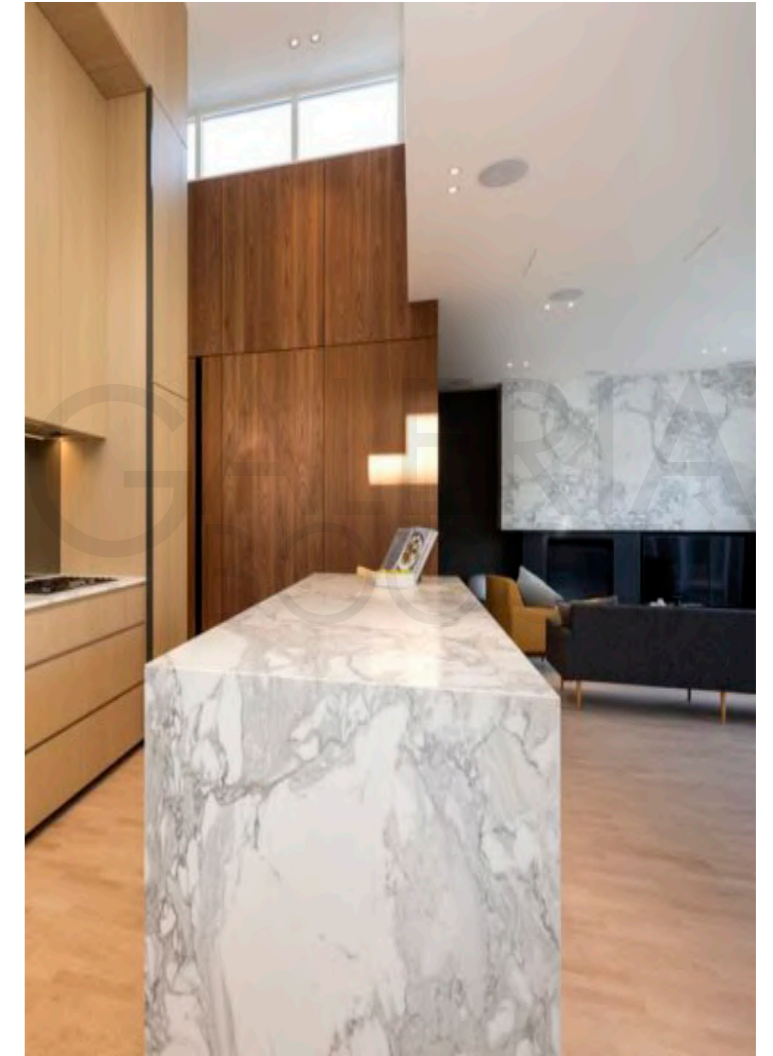
# GALERIA BOGOTÀ

## Calacatta

is a timeless testimony that reminds us that the beauty of the classics, although reinterpreted, always return. An unequaled natural stone if architects and interior designers want to dress up luxury interiors elegantly



# GALERIA BOGOTÀ



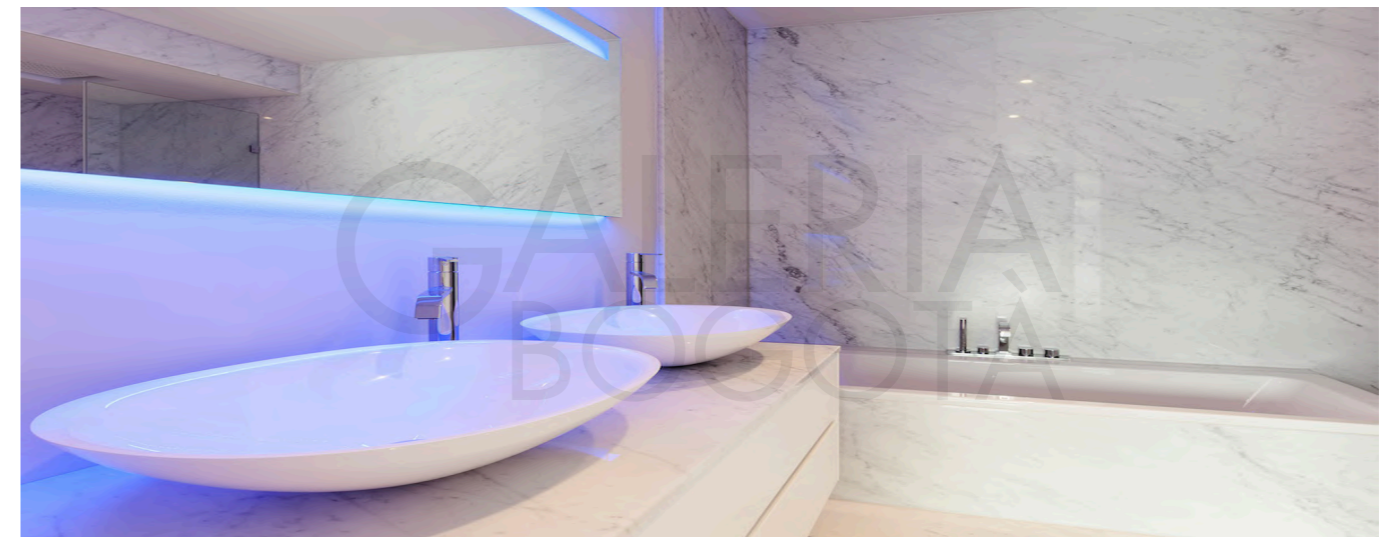
# GALERIA BOGOTÀ

## Carrara

with its pure white background and gentle gray veins, is a timeless testimony to classic elegance. Revered by architects and interior designers, this marble brings a touch of serene luxury to interiors, ensuring spaces are both sophisticated and timelessly beautiful.



# GALERIA BOGOTÀ



# GALERIA BOGOTÀ



This quality is specially imported by Alhassana, quantities is available for mega projects at our factory blocks, slabs, or tiles.

## Thassos White

is a pure white marble (Dolomite Marble), natural stone. Its crystalline, snowy and homogeneous tone crown it as one of the whitest marbles that exist. Its name is inspired by the Greek island of Thassos, the island of mermaids and natural pools. Today this paradise is famous for its houses and white sands. Its Saliara beach is known as "the marble beach" for its clarity and transparency. The same qualities are found in Thassos White, an intensely immaculate natural stone, a key piece in interiors, worktops and water areas.



# GALERIA BOGOTÀ



# GALERIA BOGOTÀ

## Our Latest Works



Lake View Cairo

# GALERIA BOGOTÀ

Lake View



# GALERIA BOGOTÀ



# GALERIA BOGOTÀ



# GALERIA BOGOTÀ

Andrea Eastcort Rehab



# GALERIA BOGOTÀ



# GALERIA BOGOTÀ

Stone Park



# GALERIA BOGOTÀ



# GALERIA BOGOTÀ

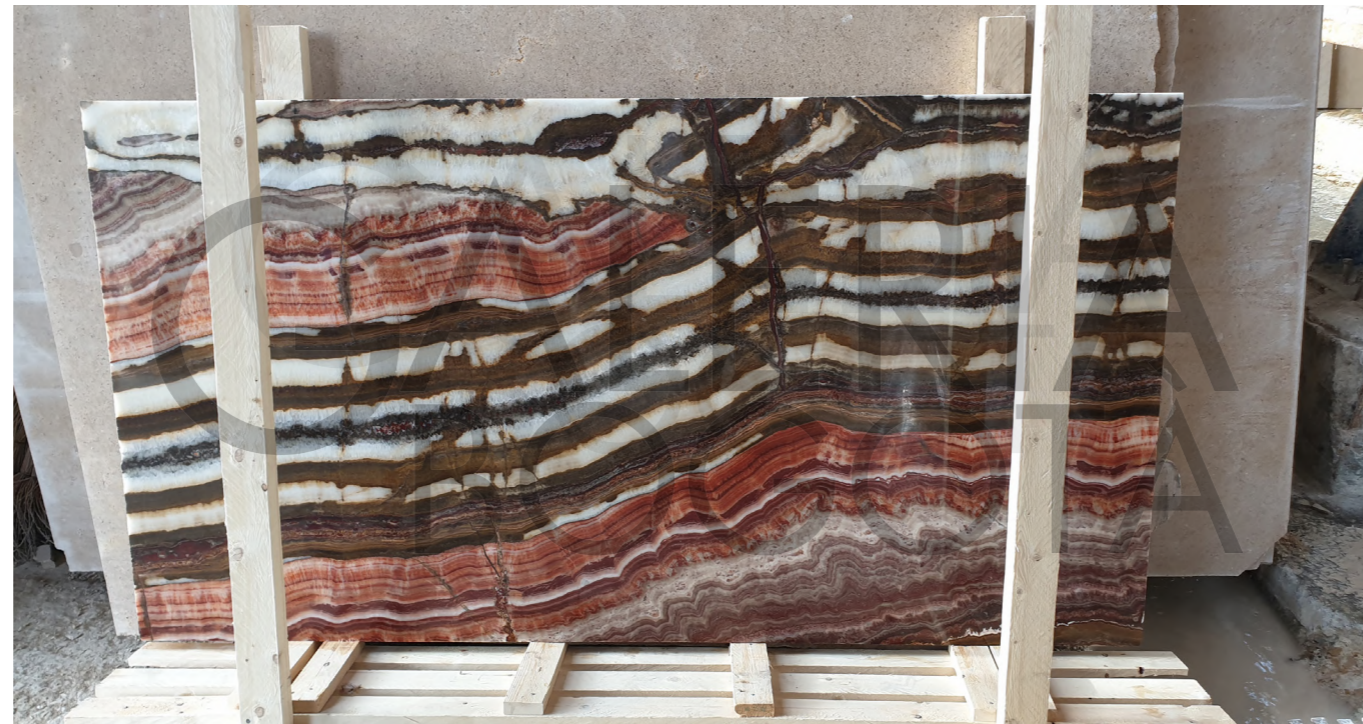


# GALERIA BOGOTÀ

Other Work



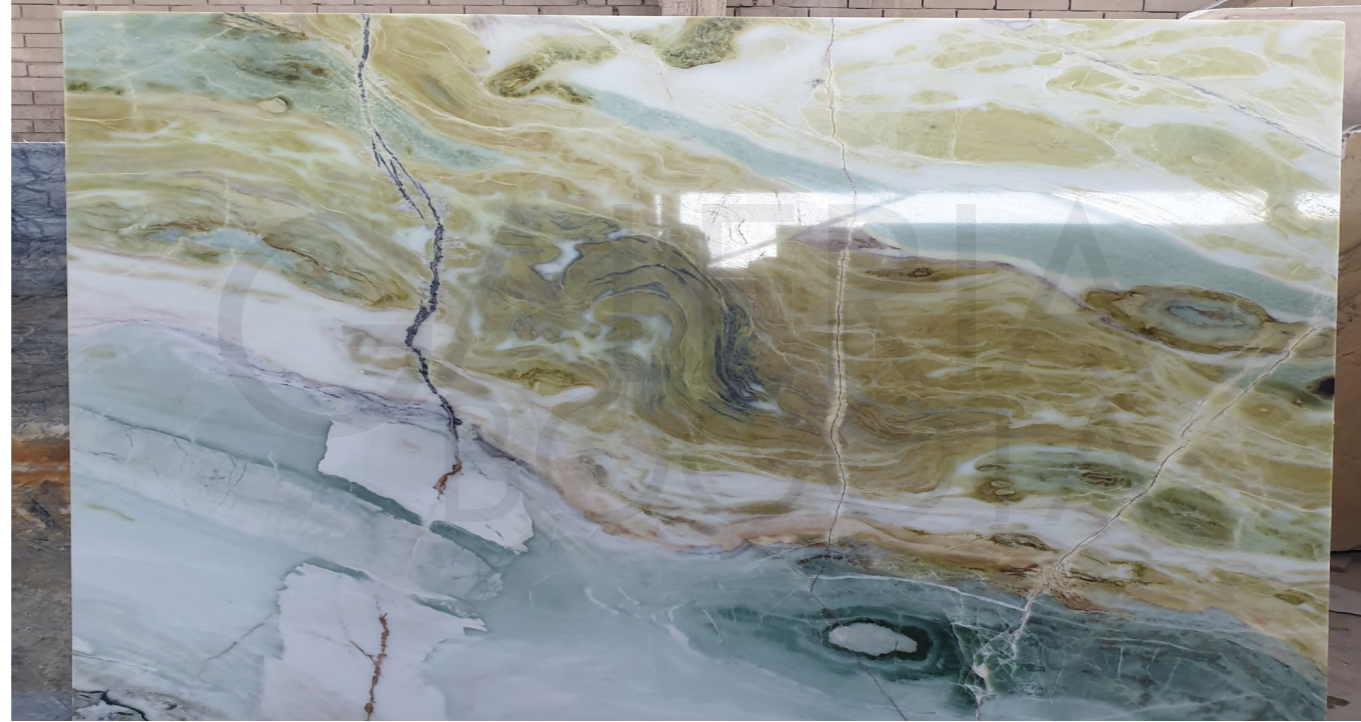
# GALERIA BOGOTÀ



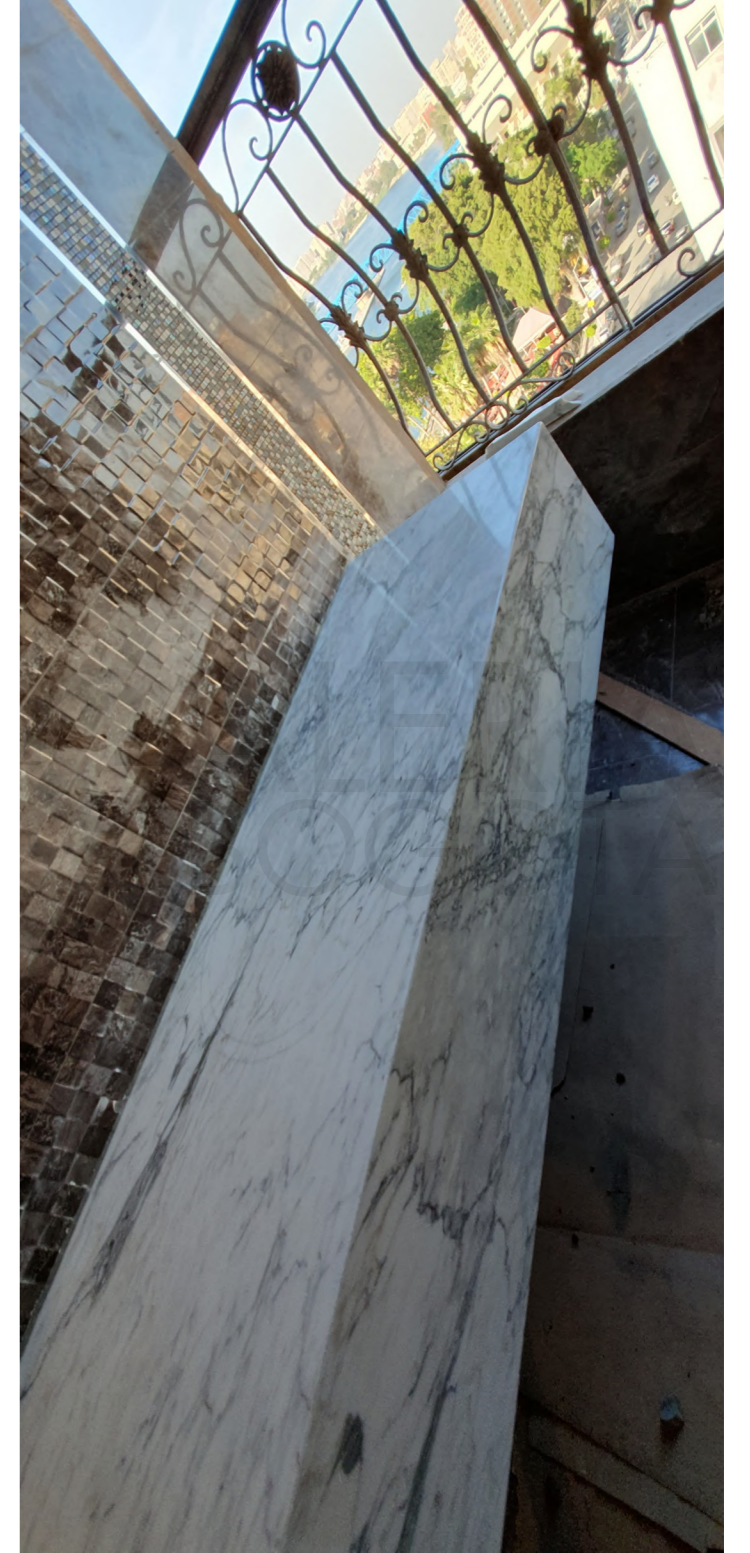
# GALERIA BOGOTÀ



# GALERIA BOGOTÀ



# GALERIA BOGOTÀ



# GALERIA BOGOTÀ



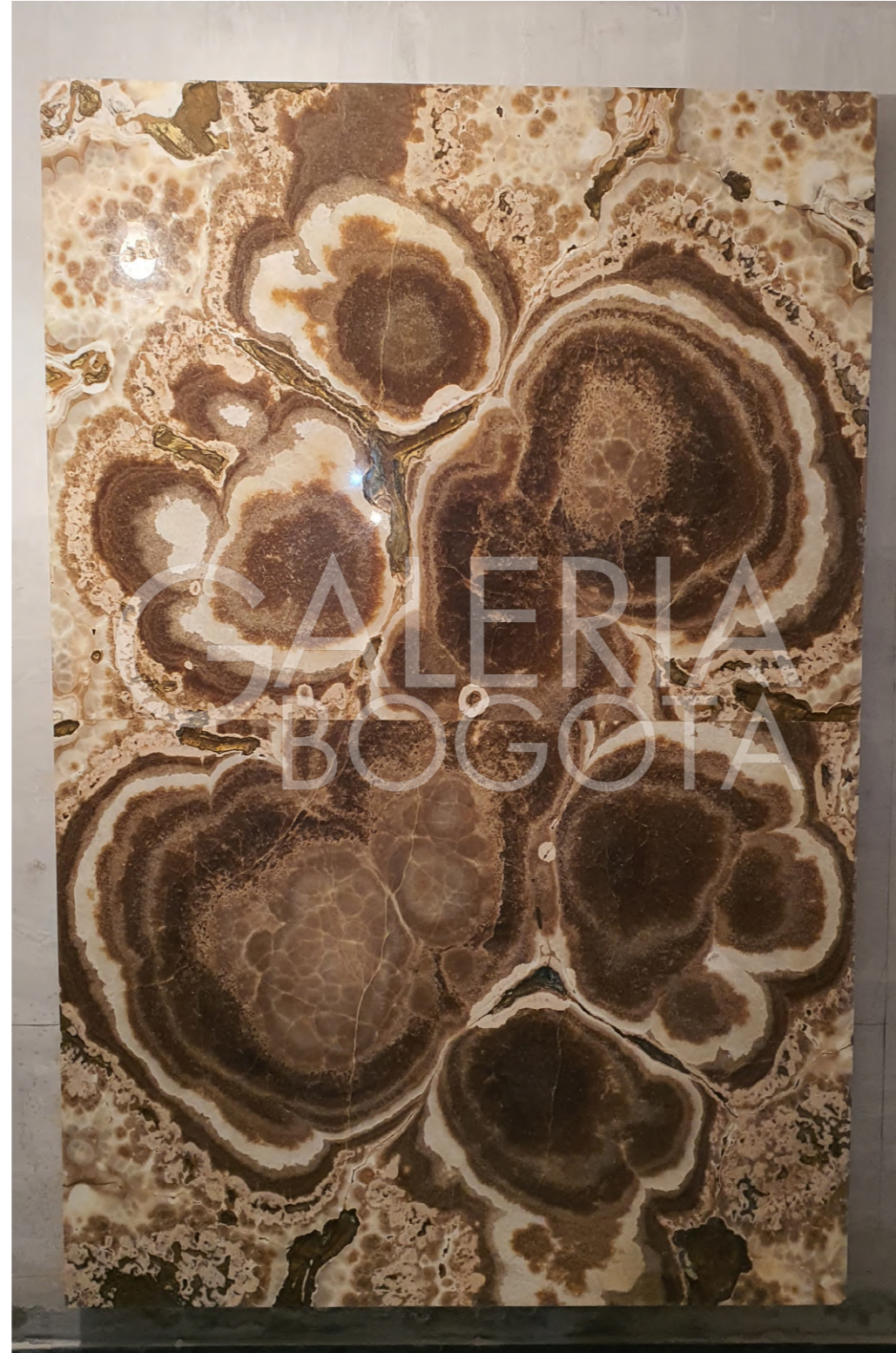
# GALERIA BOGOTÀ



# GALERIA BOGOTÀ



# GALERIA BOGOTÀ



# GALERIA BOGOTÀ



# GALERIA BOGOTÀ



# GALERIA BOGOTÀ



# GALERIA BOGOTÀ



# GALERIA BOGOTÀ



# GALERIA BOGOTÀ



# GALERIA BOGOTÀ



# GALERIA BOGOTÀ



# About Galeria Bogotà

Galeria Bogotà is the first Egyptian concept marble manufacturer, we develop new marble artistic treatments and solutions and we do create contemporary marble furniture, artworks and we help you to choose the best natural stone flooring and cladding and we apply it for the best function. The art of nature!



Galeria Bogotà is an extension for Alhassana factory, Alhassana development and quarries dealing with artistic, residential and commercial projects.

# Zeiad Haggag

Marble artist

Stone expert

Chairman / Galeria Bogotà

Managing director of  
Alhassana marble



# GALERIA BOGOTÀ

MARBLE

# alhasana

0111 679 1118 - 0100 101 0543 - 0111 867 9995

Galeria bogota office location  
10 Al Mahdi Abdel Moniem  
From Youssef Abbas, Cairo,  
11765 Egypt.

alhasana factory location  
Shak Al Thoban industrial  
zone, Al Hassana, Tura, Cairo,  
4064010 Egypt.

[Info@galeriabogota.com](mailto:Info@galeriabogota.com)  
[Info@alhasana.com](mailto:Info@alhasana.com)

[Www.galeriabogota.com](http://www.galeriabogota.com)